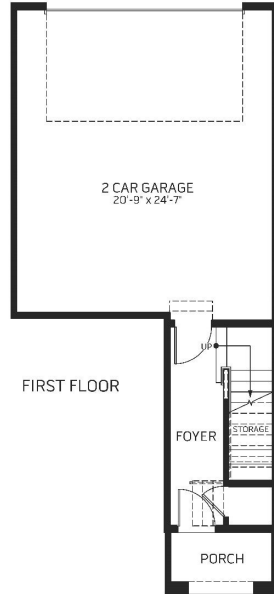
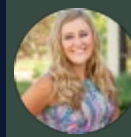


The Vanderbilt Plan

The Vanderbilt is a second level, 3 bed, 2 bath condo that will blow you away. Up the staircase from the main entrance you will be greeted by an airy living/kitchen/dining area surrounded by beautiful windows and an arched ceiling. With luxurious finishes throughout, a spacious owner suite and a cozy covered deck, you will be eager to call this place home. This unit comes with an attached garage.

CALL 970-716-6088 TO SCHEDULE A 1 ON 1 APPOINTMENT

Plans and elevations are artist's renderings only, may not accurately represent the actual condition of a home as constructed, and may contain options which are not standard on all models. We reserve the right to make changes to these floor plans, specifications, and elevations without prior notice. Stated dimensions and square footage are approximate and should not be used as representation of the home's precise or actual size.



Plan: Vanderbilt



*Floor plan and specifications subject to change without notice.

CALL 970-716-6088 TO SCHEDULE A 1 ON 1 APPOINTMENT

Plans and elevations are artist's renderings only, may not accurately represent the actual condition of a home as constructed, and may contain options which are not standard on all models. We reserve the right to make changes to these floor plans, specifications, and elevations without prior notice. Stated dimensions and square footage are approximate and should not be used as representation of the home's precise or actual size.