



2120 Falling Leaf #3, Windsor, CO 80550

Community: Raintance Condos **Floor Plan:** Rockefeller 1,395 Finished Sq Ft.  2 Bedrooms  2.0 Full Baths  2 Car Garage  2.0
Stories**\$446,750******MOVE-IN READY!****

This home qualifies for our current incentive options: a locked 30-year interest rate as low as 4.49% OR up to \$35,000 in flex cash - Call or text us for more information: 970-716-6088. Buyer must contract by October 31st and close by December 20th, 2024.

The Rockefeller is a second-level condo unit that provides stunning views and an abundance of natural light. Upon arrival through the front door, you will find an entrance hallway perfect for a key drop or mudroom area. Once up the stairs, you will discover spacious, open-concept living. You will notice the unique arched ceiling and generous amount of windows throughout the living room. A covered deck is right off the living room. Down the hall you will discover a guest bedroom/office space, guest bathroom and Owner's suite with beautiful finishes.

This unit has MOUNTAIN VIEWS!

This home is finished with stainless steel appliance package with fridge, washer & dryer, white shaker cabinets, white quartz countertops, black kitchen & bathroom faucets, black cabinet pulls, carbon 4x16 kitchen backsplash, ambassador luxury vinyl plank flooring, smokey gray carpet in bedrooms, black ceiling fan in living room, garage door opener, A/C. **This plan comes equipped with a move-in ready appliance package, including microwave, refrigerator, washer, dryer, and blinds!**

Photos are of the actual home!

CALL 970-716-6088 TO SCHEDULE A 1 ON 1 APPOINTMENT

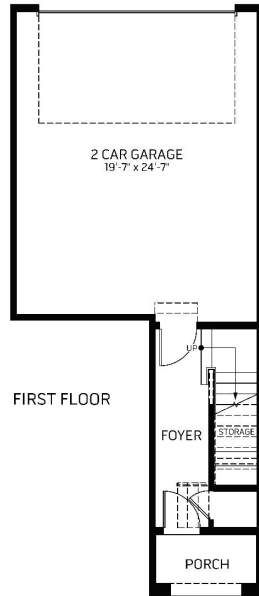


2120 Falling Leaf #3, Windsor, CO 80550

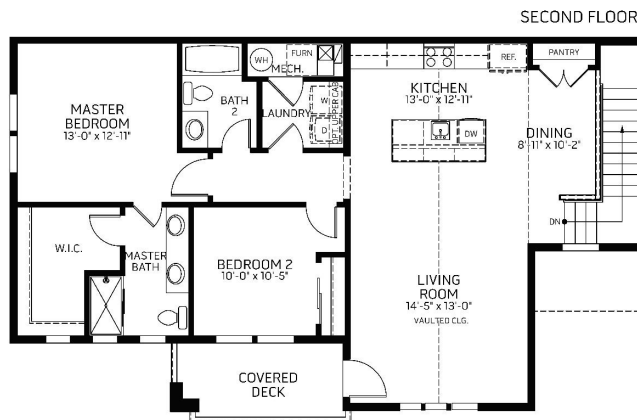
Community: Raindance Condos **Floor Plan:** Rockefeller

\$446,750

1,395 Finished Sq Ft.
 2 Bedrooms
 2.0 Full Baths
 2 Car Garage
 2.0 Stories



Plan: Rockefeller



*Floor plan and specifications subject to change without notice.

CALL 970-716-6088 TO SCHEDULE A 1 ON 1 APPOINTMENT

Plans and elevations are artist's renderings only, may not accurately represent the actual condition of a home as constructed, and may contain options which are not standard on all models. We reserve the right to make changes to these floor plans, specifications, and elevations without prior notice. Stated dimensions and square footage are approximate and should not be used as representation of the home's precise or actual size.