

Clemens

Community: Trailside Trailblazer - Single Family Homes

Starting From
\$589,500

2,288 Finished Sq Ft. 3 Bedrooms 2.5 Full Baths 2 Car Garage 2.0 Stories



ELEVATION 1



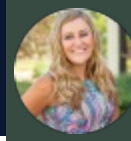
ELEVATION 2

The Clemens Plan

The Clemens is one of our most versatile floorplans - It has something for everyone! You will love the openness of the main floor, with it's large living area that feeds right into the dining and kitchen areas. Upstairs has 3 generous sized bedrooms (all boasting walk in closets) and a loft, perfect for playing games, watching movies, working out, or turning it into an extra office area.

CALL 970-716-6088 TO SCHEDULE A 1 ON 1 APPOINTMENT

Plans and elevations are artist's renderings only, may not accurately represent the actual condition of a home as constructed, and may contain options which are not standard on all models. We reserve the right to make changes to these floor plans, specifications, and elevations without prior notice. Stated dimensions and square footage are approximate and should not be used as representation of the home's precise or actual size.



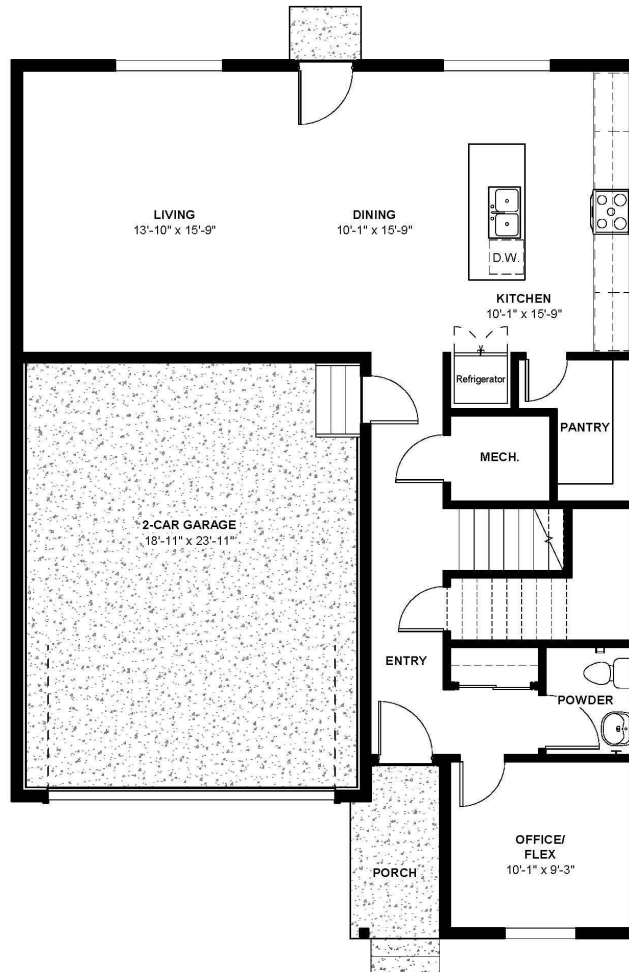
Clemens

Community: Trailside Trailblazer - Single Family Homes

2,288 Finished Sq Ft. 3 Bedrooms 2.5 Full Baths 2 Car Garage 2.0 Stories

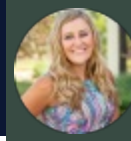
Starting From
\$589,500

1 - 1.6.25



CALL 970-716-6088 TO SCHEDULE A 1 ON 1 APPOINTMENT

Plans and elevations are artist's renderings only, may not accurately represent the actual condition of a home as constructed, and may contain options which are not standard on all models. We reserve the right to make changes to these floor plans, specifications, and elevations without prior notice. Stated dimensions and square footage are approximate and should not be used as representation of the home's precise or actual size.



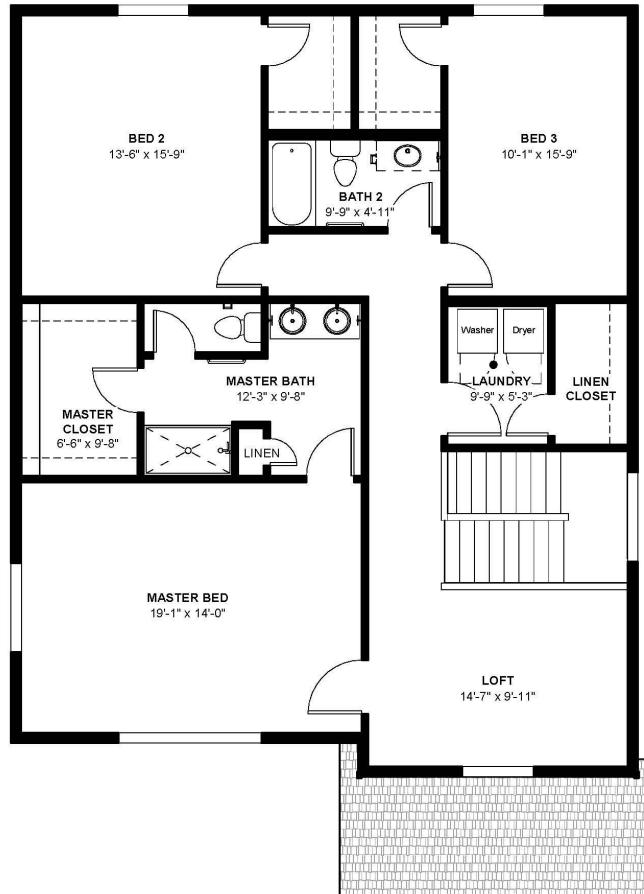
Clemens

Community: Trailside Trailblazer - Single Family Homes

Starting From
\$589,500

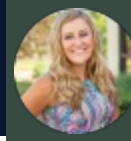
2,288 Finished Sq Ft. 3 Bedrooms 2.5 Full Baths 2 Car Garage 2.0 Stories

2 - 1.6.25



CALL 970-716-6088 TO SCHEDULE A 1 ON 1 APPOINTMENT

Plans and elevations are artist's renderings only, may not accurately represent the actual condition of a home as constructed, and may contain options which are not standard on all models. We reserve the right to make changes to these floor plans, specifications, and elevations without prior notice. Stated dimensions and square footage are approximate and should not be used as representation of the home's precise or actual size.



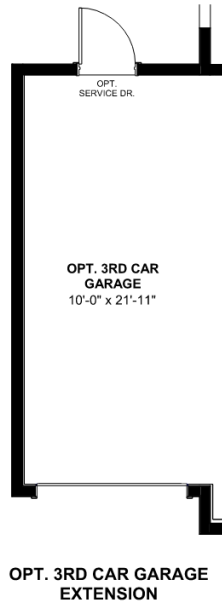
Clemens

Community: Trailside Trailblazer - Single Family Homes

Starting From
\$589,500

- 2,288 Finished Sq Ft.
- 3 Bedrooms
- 2.5 Full Baths
- 2 Car Garage
- 2.0 Stories

3 car option - 1.6.25



CALL 970-716-6088 TO SCHEDULE A 1 ON 1 APPOINTMENT

Plans and elevations are artist's renderings only, may not accurately represent the actual condition of a home as constructed, and may contain options which are not standard on all models. We reserve the right to make changes to these floor plans, specifications, and elevations without prior notice. Stated dimensions and square footage are approximate and should not be used as representation of the home's precise or actual size.