



Tesla

Community: Trailside Alley Load - Single Family Homes

Starting From
\$560,500

2,283 Finished Sq Ft. 3 Bedrooms 2.5 Full Baths 2 Car Garage 2.0 Stories



The Tesla Plan

The Tesla floorplan by Hartford Homes features a stunning open floor concept with a gourmet kitchen and large eat-in kitchen island. The second level provides a functional loft, master suite and 2 guest bedrooms. With 2,283 sq ft of finished space, this is a home you'll want to check out! Basement options offered!

CALL 970-716-6088 TO SCHEDULE A 1 ON 1 APPOINTMENT

Plans and elevations are artist's renderings only, may not accurately represent the actual condition of a home as constructed, and may contain options which are not standard on all models. We reserve the right to make changes to these floor plans, specifications, and elevations without prior notice. Stated dimensions and square footage are approximate and should not be used as representation of the home's precise or actual size.



Tesla

Community: Trailside Alley Load - Single Family Homes

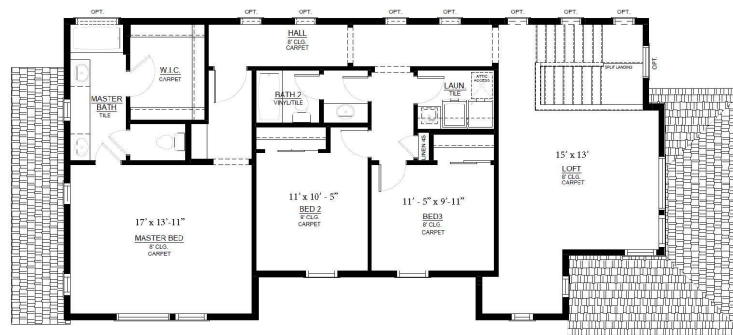
Starting From
\$560,500

2,283 Finished Sq Ft.
 3 Bedrooms
 2.5 Full Baths
 2 Car Garage
 2.0 Stories

Tesla Floor Plan Level 1



Level 2



All measurements are approximate and not guaranteed. Illustration provided for marketing and convenience only and is not part of a legally binding contract.

CALL 970-716-6088 TO SCHEDULE A 1 ON 1 APPOINTMENT

Plans and elevations are artist's renderings only, may not accurately represent the actual condition of a home as constructed, and may contain options which are not standard on all models. We reserve the right to make changes to these floor plans, specifications, and elevations without prior notice. Stated dimensions and square footage are approximate and should not be used as representation of the home's precise or actual size.