



1601 Alfalfa Ln., Johnstown, CO 80534

**Community:** Granary **Floor Plan:** Armstrong

**\$478,650**

1,779 Finished Sq Ft. 3 Bedrooms 2.0 Full Baths 2 Car Garage 1.0 Stories



**\*\*Estimated Completion Date: November 2024\*\***

Welcome to the Armstrong, a charming new home that combines modern comforts with classic appeal. This thoughtfully designed floorplan features 3 spacious bedrooms and 2 full bathrooms, offering a perfect blend of functionality and style. Enjoy the outdoors in your private yard, ideal for relaxation or play. This home promises a fresh start in a vibrant, growing neighborhood.

This home will be finished with Chai Latte painted cabinets, Home Chef Gas Appliance package, Grey Expo quartz countertops throughout, Wild Dunes (warm/neutral) vinyl plank flooring, Black door levers & faucets

Photos are of a previously completed home, therefore finishes may be different in the actual home.

**CALL 970-716-6088 TO SCHEDULE A 1 ON 1 APPOINTMENT**

Plans and elevations are artist's renderings only, may not accurately represent the actual condition of a home as constructed, and may contain options which are not standard on all models. We reserve the right to make changes to these floor plans, specifications, and elevations without prior notice. Stated dimensions and square footage are approximate and should not be used as representation of the home's precise or actual size.

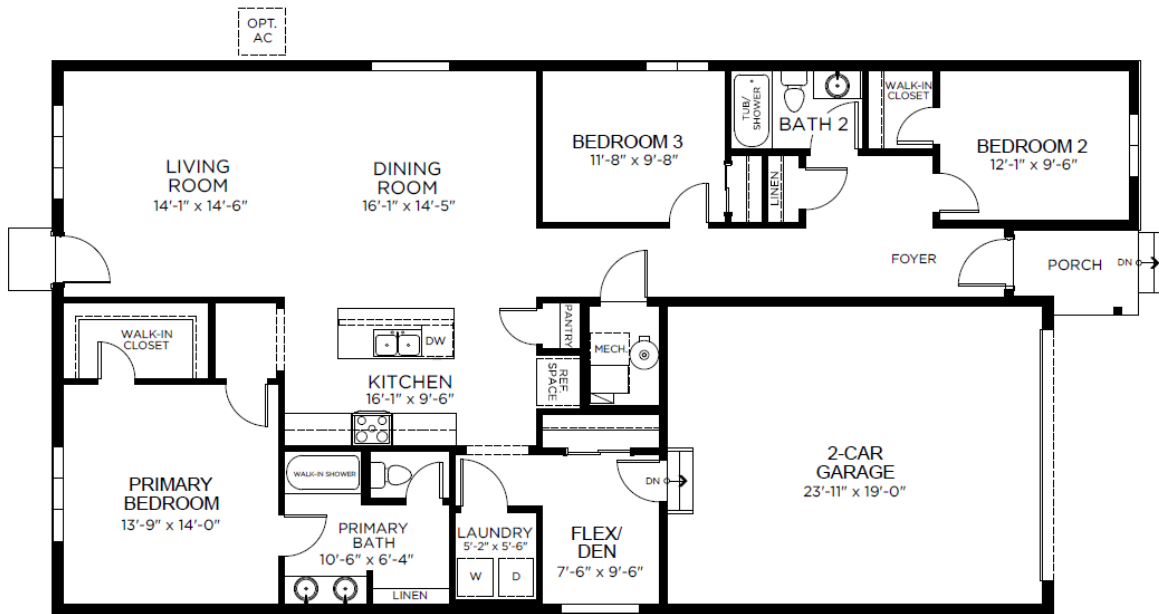


1601 Alfalfa Ln., Johnstown, CO 80534

Community: Granary Floor Plan: Armstrong

**\$478,650**

1,779 Finished Sq Ft. 3 Bedrooms 2.0 Full Baths 2 Car Garage 1.0 Stories



FIRST FLOOR

CALL 970-716-6088 TO SCHEDULE A 1 ON 1 APPOINTMENT

Plans and elevations are artist's renderings only, may not accurately represent the actual condition of a home as constructed, and may contain options which are not standard on all models. We reserve the right to make changes to these floor plans, specifications, and elevations without prior notice. Stated dimensions and square footage are approximate and should not be used as representation of the home's precise or actual size.

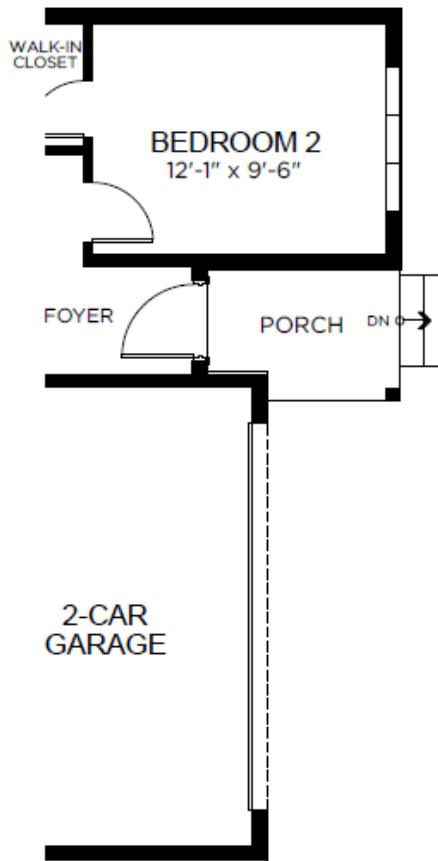


1601 Alfalfa Ln., Johnstown, CO 80534

**Community:** Granary **Floor Plan:** Armstrong

**\$478,650**

1,779 Finished Sq Ft. 3 Bedrooms 2.0 Full Baths 2 Car Garage 1.0 Stories



CALL 970-716-6088 TO SCHEDULE A 1 ON 1 APPOINTMENT

Plans and elevations are artist's renderings only, may not accurately represent the actual condition of a home as constructed, and may contain options which are not standard on all models. We reserve the right to make changes to these floor plans, specifications, and elevations without prior notice. Stated dimensions and square footage are approximate and should not be used as representation of the home's precise or actual size.