

Rockefeller

Community: Mosaic Condos

 1,395 Finished Sq Ft.  2 Bedrooms  2 Full Baths  2 Car Garage  2.0
Stories



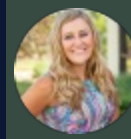
The Rockefeller Plan

The Rockefeller is a second-level condo unit that provides stunning views and an abundance of natural light. Upon arrival through the front door, you will find an entrance hallway perfect for a key drop or mudroom area. Once up the stairs, you will discover spacious, open-concept living. You will notice the unique arched ceiling and generous amount of windows throughout the living room. A covered deck is right off the living room. Down the hall you will discover a guest bedroom/office space, guest bathroom and Owner's suite with beautiful finishes.

This unit has an attached garage.

CALL 970-716-6088 TO SCHEDULE A 1 ON 1 APPOINTMENT

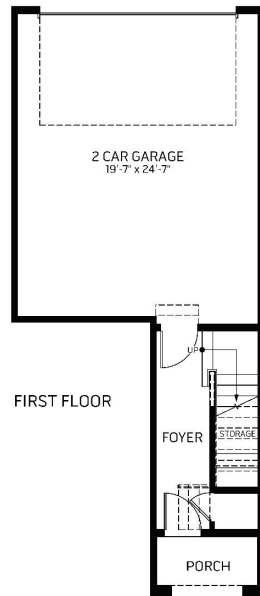
Plans and elevations are artist's renderings only, may not accurately represent the actual condition of a home as constructed, and may contain options which are not standard on all models. We reserve the right to make changes to these floor plans, specifications, and elevations without prior notice. Stated dimensions and square footage are approximate and should not be used as representation of the home's precise or actual size.



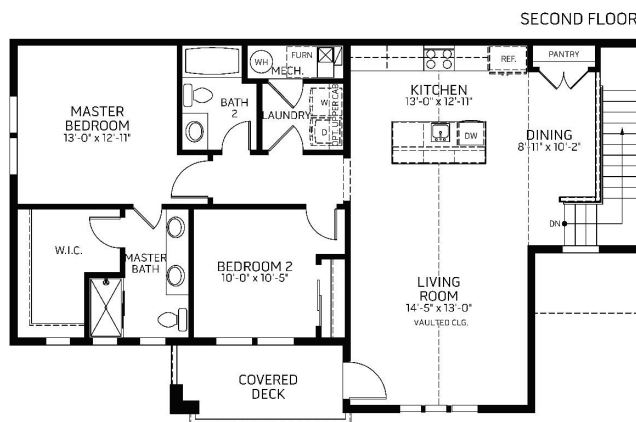
Rockefeller

Community: Mosaic Condos

1,395 Finished Sq Ft.
 2 Bedrooms
 2 Full Baths
 2 Car Garage
 2.0 Stories



Plan: Rockefeller



*Floor plan and specifications subject to change without notice.

CALL 970-716-6088 TO SCHEDULE A 1 ON 1 APPOINTMENT

Plans and elevations are artist's renderings only, may not accurately represent the actual condition of a home as constructed, and may contain options which are not standard on all models. We reserve the right to make changes to these floor plans, specifications, and elevations without prior notice. Stated dimensions and square footage are approximate and should not be used as representation of the home's precise or actual size.