

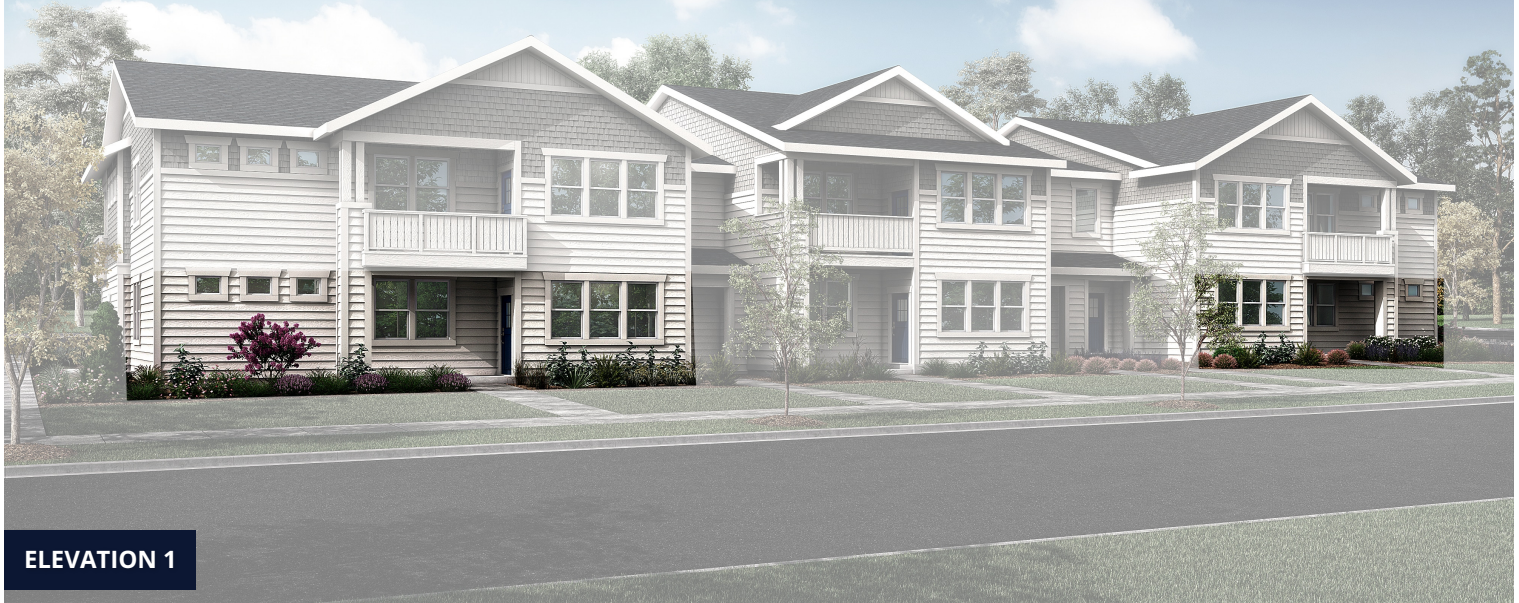


Morgan

Community: Mosaic Condos

Starting From
\$410,400

1,171 Finished Sq Ft. 2 Bedrooms 2 Full Baths 1 Car Garage 1.0 Stories



The Morgan Plan

The Morgan floorplan is a cute 2 bed, 2 bath condo with generous entertaining space. The front entry leads you into the cozy living room and extends into the kitchen. Down the hall you will find a guest bedroom or office space, the guest bathroom and a quaint mudroom/laundry room right off the garage. At the end of the hall you will find the owner's suite with large, beautiful windows and an impressive master bath. This unit has an attached garage.

CALL 970-716-6088 TO SCHEDULE A 1 ON 1 APPOINTMENT

Plans and elevations are artist's renderings only, may not accurately represent the actual condition of a home as constructed, and may contain options which are not standard on all models. We reserve the right to make changes to these floor plans, specifications, and elevations without prior notice. Stated dimensions and square footage are approximate and should not be used as representation of the home's precise or actual size.

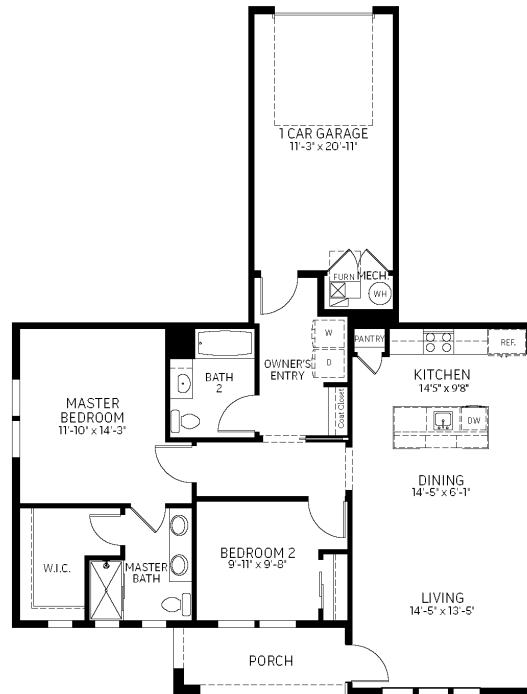


Morgan

Community: Mosaic Condos

Starting From
\$410,400

1,171 Finished Sq Ft. 2 Bedrooms 2 Full Baths 1 Car Garage 1.0 Stories



FLOOR PLAN

*Floor plan and specifications subject to change without notice.

CALL 970-716-6088 TO SCHEDULE A 1 ON 1 APPOINTMENT

Plans and elevations are artist's renderings only, may not accurately represent the actual condition of a home as constructed, and may contain options which are not standard on all models. We reserve the right to make changes to these floor plans, specifications, and elevations without prior notice. Stated dimensions and square footage are approximate and should not be used as representation of the home's precise or actual size.