

Oakley

Community: Bloom Trailblazer Collection - Single Family Homes

Starting From
\$630,000

3,038 Finished Sq Ft. 4 Bedrooms 2.5 Full Baths 2 Car Garage 2.0 Stories



ELEVATION 1



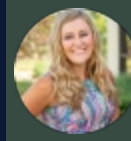
ELEVATION 2

The Oakley Plan

The Oakley is one of our expansive floorplans! With over 3,000 square feet, there is no shortage of space to call your home. The Oakley offers an expansive kitchen and entertaining area on the main floor, and 4 bedrooms, an office/flex space, and a large loft on the second floor, making this is the perfect home for families of all sizes.

CALL 970-716-6088 TO SCHEDULE A 1 ON 1 APPOINTMENT

Plans and elevations are artist's renderings only, may not accurately represent the actual condition of a home as constructed, and may contain options which are not standard on all models. We reserve the right to make changes to these floor plans, specifications, and elevations without prior notice. Stated dimensions and square footage are approximate and should not be used as representation of the home's precise or actual size.



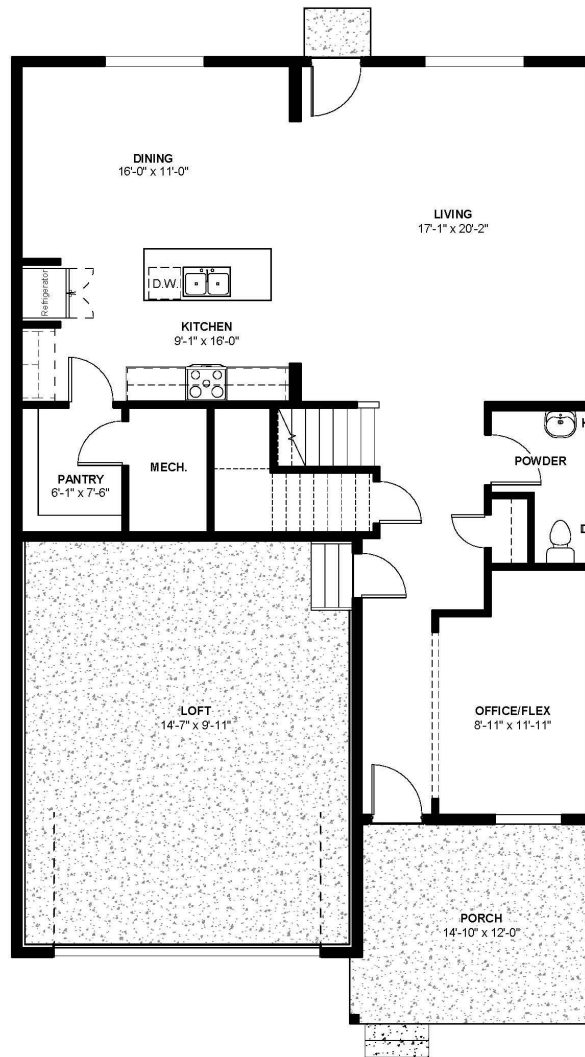
Oakley

Community: Bloom Trailblazer Collection - Single Family Homes

3,038 Finished Sq Ft. 4 Bedrooms 2.5 Full Baths 2 Car Garage 2.0 Stories

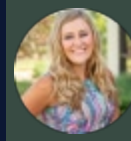
Starting From
\$630,000

1 - 11.7.24



CALL 970-716-6088 TO SCHEDULE A 1 ON 1 APPOINTMENT

Plans and elevations are artist's renderings only, may not accurately represent the actual condition of a home as constructed, and may contain options which are not standard on all models. We reserve the right to make changes to these floor plans, specifications, and elevations without prior notice. Stated dimensions and square footage are approximate and should not be used as representation of the home's precise or actual size.



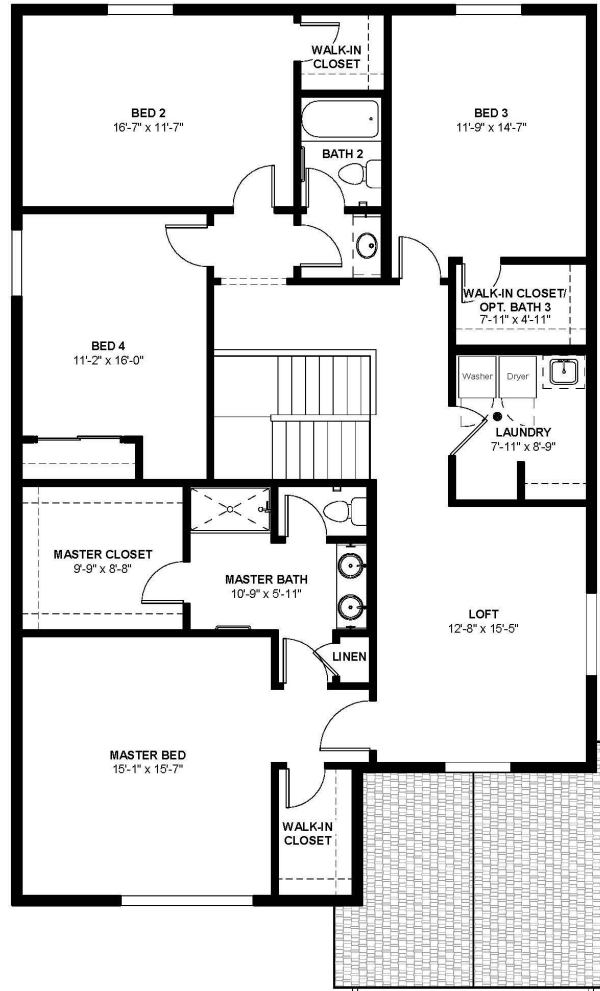
Oakley

Community: Bloom Trailblazer Collection - Single Family Homes

Starting From
\$630,000

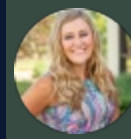
3,038 Finished Sq Ft. 4 Bedrooms 2.5 Full Baths 2 Car Garage 2.0 Stories

2 - 11.7.24



CALL 970-716-6088 TO SCHEDULE A 1 ON 1 APPOINTMENT

Plans and elevations are artist's renderings only, may not accurately represent the actual condition of a home as constructed, and may contain options which are not standard on all models. We reserve the right to make changes to these floor plans, specifications, and elevations without prior notice. Stated dimensions and square footage are approximate and should not be used as representation of the home's precise or actual size.



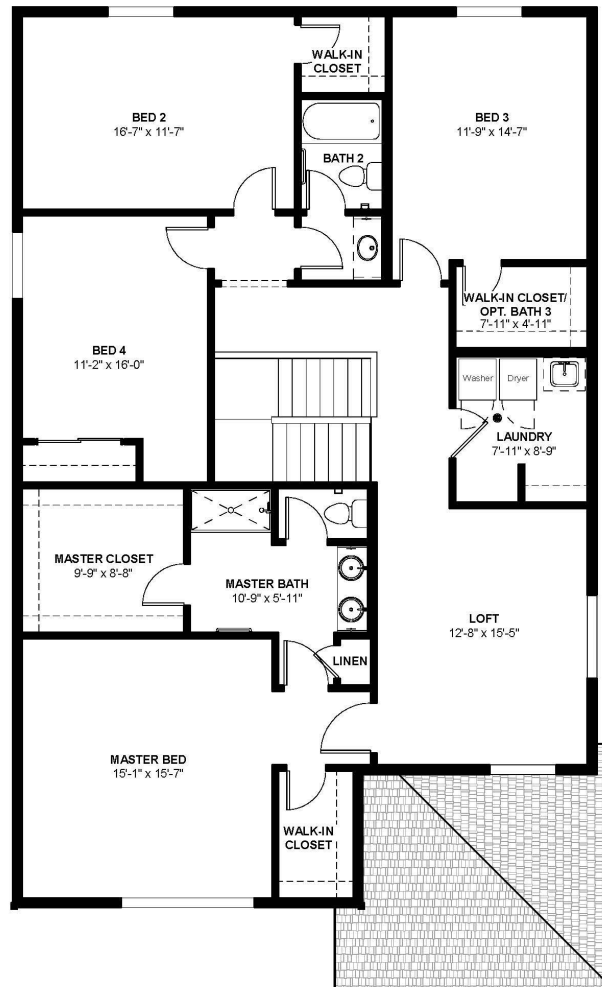
Oakley

Community: Bloom Trailblazer Collection - Single Family Homes

3,038 Finished Sq Ft. 4 Bedrooms 2.5 Full Baths 2 Car Garage 2.0 Stories

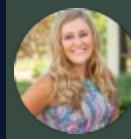
Starting From
\$630,000

3 - 11.7.24



CALL 970-716-6088 TO SCHEDULE A 1 ON 1 APPOINTMENT

Plans and elevations are artist's renderings only, may not accurately represent the actual condition of a home as constructed, and may contain options which are not standard on all models. We reserve the right to make changes to these floor plans, specifications, and elevations without prior notice. Stated dimensions and square footage are approximate and should not be used as representation of the home's precise or actual size.



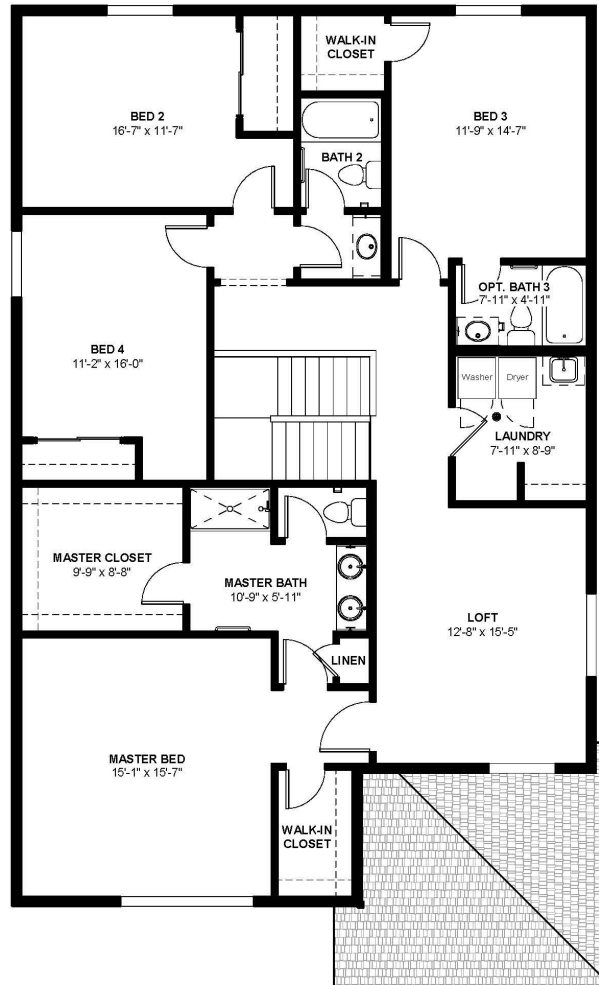
Oakley

Community: Bloom Trailblazer Collection - Single Family Homes

3,038 Finished Sq Ft. 4 Bedrooms 2.5 Full Baths 2 Car Garage 2.0 Stories

Starting From
\$630,000

4 - 11.7.24



CALL 970-716-6088 TO SCHEDULE A 1 ON 1 APPOINTMENT

Plans and elevations are artist's renderings only, may not accurately represent the actual condition of a home as constructed, and may contain options which are not standard on all models. We reserve the right to make changes to these floor plans, specifications, and elevations without prior notice. Stated dimensions and square footage are approximate and should not be used as representation of the home's precise or actual size.