



# Sage

**Community:** Bloom Cottages

Starting From  
**\$487,400**

1,538 Finished Sq Ft. 4 Bedrooms 3 Full Baths 1 Car Garage 2.0 Stories



## The Sage Plan

Our largest cottage floorplan offers a generous layout ideal for gatherings and families of all types. Featuring four bedrooms and three baths, this home offers ample space and comfort. Your own private backyard is the perfect space to relax and enjoy some fresh air with your pup and friends. Access to the grassy cottage common areas provides the perfect opportunity to spread out and meet your neighbors for a leisurely picnic amidst nature's beauty.

**VIRTUALLY TOUR THE SAGE FLOORPLAN!**

**CALL 970-716-6088 TO SCHEDULE A 1 ON 1 APPOINTMENT**

Plans and elevations are artist's renderings only, may not accurately represent the actual condition of a home as constructed, and may contain options which are not standard on all models. We reserve the right to make changes to these floor plans, specifications, and elevations without prior notice. Stated dimensions and square footage are approximate and should not be used as representation of the home's precise or actual size.

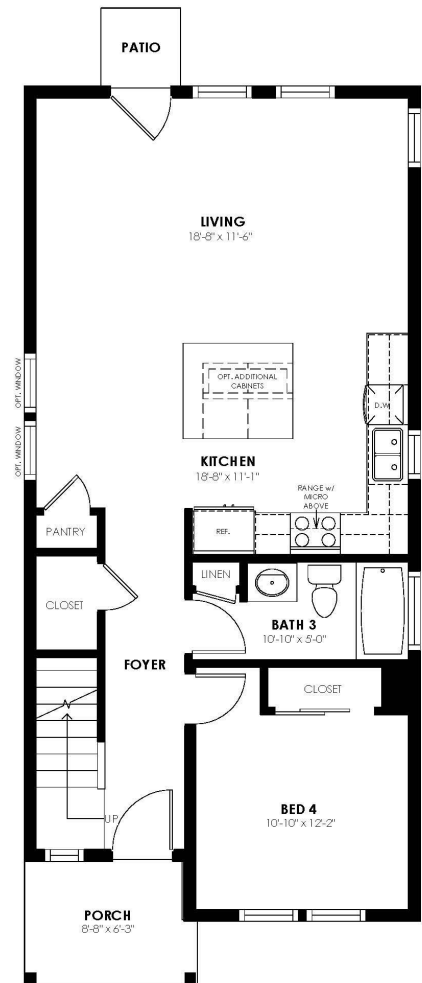


# Sage

**Community:** Bloom Cottages

Starting From  
**\$487,400**

- 1,538 Finished Sq Ft.
- 4 Bedrooms
- 3 Full Baths
- 1 Car Garage
- 2.0 Stories



**CALL 970-716-6088 TO SCHEDULE A 1 ON 1 APPOINTMENT**

Plans and elevations are artist's renderings only, may not accurately represent the actual condition of a home as constructed, and may contain options which are not standard on all models. We reserve the right to make changes to these floor plans, specifications, and elevations without prior notice. Stated dimensions and square footage are approximate and should not be used as representation of the home's precise or actual size.

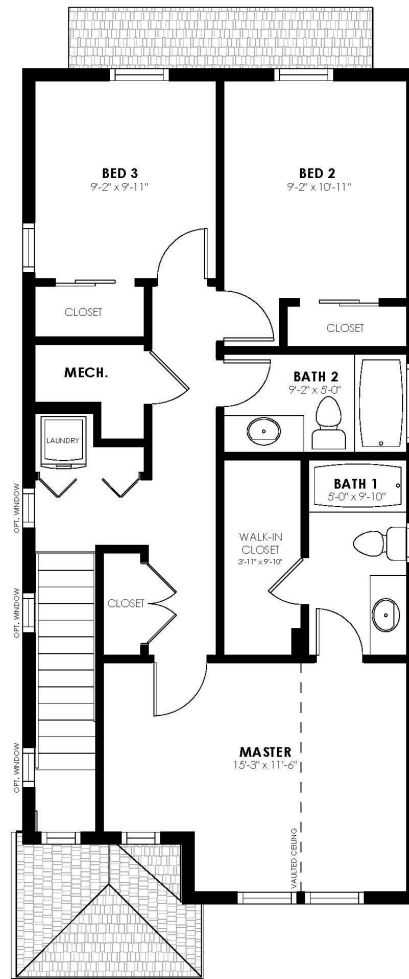


# Sage

**Community:** Bloom Cottages

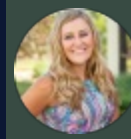
Starting From  
**\$487,400**

1,538 Finished Sq Ft. 4 Bedrooms 3 Full Baths 1 Car Garage 2.0 Stories



**CALL 970-716-6088 TO SCHEDULE A 1 ON 1 APPOINTMENT**

Plans and elevations are artist's renderings only, may not accurately represent the actual condition of a home as constructed, and may contain options which are not standard on all models. We reserve the right to make changes to these floor plans, specifications, and elevations without prior notice. Stated dimensions and square footage are approximate and should not be used as representation of the home's precise or actual size.

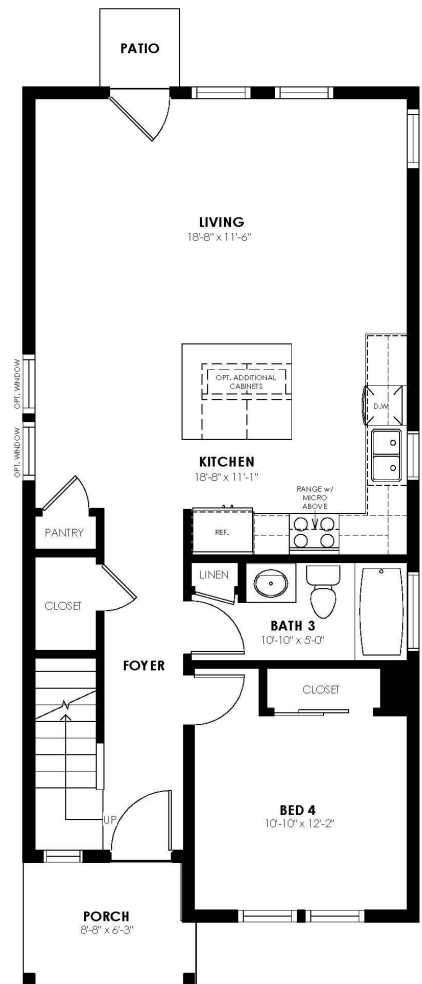


# Sage

**Community:** Bloom Cottages

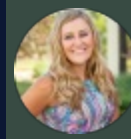
Starting From  
**\$487,400**

- 1,538 Finished Sq Ft.
- 4 Bedrooms
- 3 Full Baths
- 1 Car Garage
- 2.0 Stories



**CALL 970-716-6088 TO SCHEDULE A 1 ON 1 APPOINTMENT**

Plans and elevations are artist's renderings only, may not accurately represent the actual condition of a home as constructed, and may contain options which are not standard on all models. We reserve the right to make changes to these floor plans, specifications, and elevations without prior notice. Stated dimensions and square footage are approximate and should not be used as representation of the home's precise or actual size.

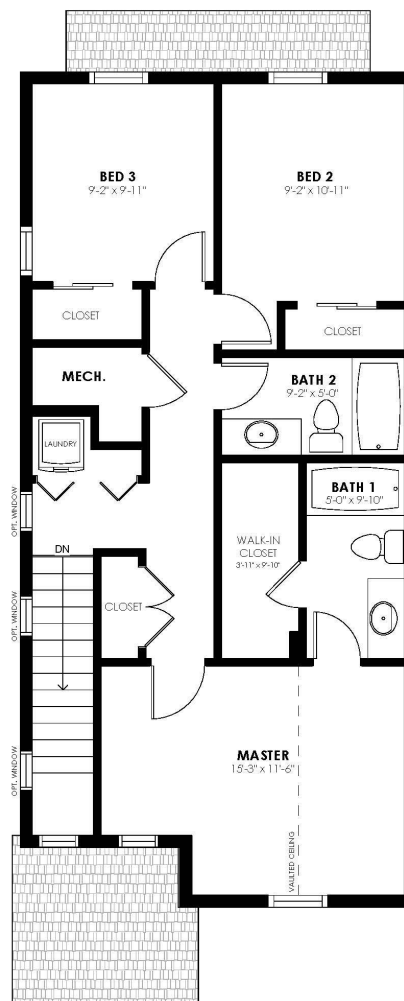


# Sage

**Community:** Bloom Cottages

Starting From  
**\$487,400**

1,538 Finished Sq Ft. 4 Bedrooms 3 Full Baths 1 Car Garage 2.0 Stories



**CALL 970-716-6088 TO SCHEDULE A 1 ON 1 APPOINTMENT**

Plans and elevations are artist's renderings only, may not accurately represent the actual condition of a home as constructed, and may contain options which are not standard on all models. We reserve the right to make changes to these floor plans, specifications, and elevations without prior notice. Stated dimensions and square footage are approximate and should not be used as representation of the home's precise or actual size.